

ANALYSIS OF INFRASTRUCTURE, GOVERNANCE, AND STAKEHOLDERS IN POLICY DEVELOPMENT AND IMPLEMENTATION IN SPORTS IN BANGLADESH

MD. ABU SAYED^{1*}, KORIMAYUM ABDUR RAHMAN¹, IKRAM HUSSAIN¹, MD. ZILLUR RAHMAN², HARISDAS THAKUR³

¹Department of Physical Education, Aligarh Muslim University, Aligarh, U.P., INDIA.

²Department of Physical Education and Sports Science, Jashore University of Science and Technology, BANGLADESH.

³Ministry of Liberation War Affairs, Government of the People's Republic of Bangladesh, BANGLADESH.

*Email: sayedsbh007@gmail.com

How to cite this article: Sayed, M.D., Rahman, K.A., Hussain, I., Rahman, M.Z., & Thakur, H. (September 2025). Analysis of infrastructure, governance, and stakeholders in policy development and implementation in sports in Bangladesh. Journal of Physical Education Research, Volume 12, Issue III, 13-26.

Received: September 07, 2025

Accepted: September 09, 2025

ABSTRACT

Drawing on an analysis of eight crucial aspects of sports policies relating to sports infrastructure, administration and management, talent identification, athlete accommodation, athlete training and coaching, funding for athletes, participation in sports, and sports science, which have informed this study. The study investigates the evolution and implementation of sports policies in Bangladesh. Adopting a mixed-methods methodology, data were collected from 21 districts via administrators, coaches, and players, and descriptive and inferential statistics were used to analyze the data and were validated with advanced tools like R Studio and IBM SPSS. The findings identify key challenges related to infrastructure deficits, budgetary mismanagement, and a lack of developed talent pathways, which help connect policy elements with stakeholder perceptions. The in-depth study presents a list of action-oriented recommendations that accommodate infrastructure modernization, financial governance reforms, and talent ecosystem development to bridge the gap between Bangladesh's sports policies and international benchmarks and develop a sustainable sports culture. This study adds to the global conversation on data for sports policy planning and decision-making, contributing especially to the emerging sphere in developing countries.

Keywords: Sports policy, infrastructure, governance, talent development.

1. INTRODUCTION

Strong sports policy development and implementation systems are the foundations upon which social, health and economic development grow. The idea of sports policies can be largely dated back to the Greek age, emphasizing exercise and its beneficial impacts on overall health. Alongside the unique socio-political challenges of the contemporary world, sports policies have emerged as an important part of government agendas around the globe. The origins of sports policies may be traced back to the Greek era, which valued physical activity and its positive effects on general health. In the modern era, sports policies have become a crucial component of governmental agendas worldwide. Countries worldwide promote developing and implementing sports policies to encourage healthy lifestyles, social inclusion, and economic development (Bonell et al., 2024; Murray et al., 2024). Research has shown that sports can be a powerful tool for social inclusion, particularly for marginalized

communities (Moustakas & Tshube, 2020). Effective policies are necessary to guarantee that everyone can access sports opportunities, regardless of socioeconomic background or other circumstances development (Bonell et al., 2024; Murray et al., 2024). The literature review investigates the salience of sport policy to healthy living, social inclusion and economic development. Research has described the barriers and limitations to adult sports participation, indicating that an effective policy for increasing/participation is needed (Crossman et al., 2024; Fan et al., 2024). Furthermore, there is a growing literature on the effects of psychological wellness and calls for sports policy responses to Athlete mental ill-health (Walton et al., 2024). Again, research findings indicated that the promotion of gender equality and human rights through policy is essential (Chan et al., 2024; Hafiar et al., 2024). Despite the evolving nature of the literature, there is insufficient research on sports policies. Research on the effectiveness of sports policies in developing countries. In the literature there is a dearth of research on how effective are sport for development and peace policies (Albujulaya et al., 2023). There is a call for research into the impact of sports policy on mental health in young elite athletes (Walton et al., 2024). Yet, also from the already-published research on physical activity outcome policies, there is no evidence-base relating to sporting environments within school settings (Woods et al., 2021).

Leading to a comprehensive and systemic approach to sports, sports policy is an important pillar of sport in a globalized world. Sports media-centric development policies of many developed nations (Russia, China, Canada, Japan, the United Kingdom, USA and so on) say not least favored have particular sports promotion and dissemination mechanisms that eventually fruit these games in that country.

Sports policy in South Asia (India, Pakistan, Sri Lanka, Nepal, Bhutan, Maldives, Bangladesh) is crucial for fostering social and personal development, bringing the region together, and promoting a competitive spirit. Each country has its unique sports policy influenced by political, economic, and social factors. Despite shared colonial heritage and cultures, each country has its own unique sports policy. The promotion of grassroots development and sports participation is the hallmark characteristic of South Asian sports strategy.

However, there is insufficient research on sports policies, particularly in developing countries. The genesis of sports policy in Bangladesh grew out of the aftermath of partitions in 1947, building a young nation with no prior ownership experience and minimal infrastructural growth. The professionalization of sports along with training for young sportsmen has become immense thanks to educational institutions. The restrictions under the National Sports Council Act (1974) were always ineffective, but in Bangladesh's context, they had become outdated for a decade now and looked irrelevant with deteriorating sports policies. As a result, there is considerable disorder in the conduct of youth and community sports while Bangladesh could be found inside at the London Olympics only as a wild card entry. Bangladesh needs a national sports strategy to resolve these issues.

Bangladesh has two governmental bodies playing a role in the policy-making of sports, namely: the Ministry of Youth and Sports, and the National Sports Council. The policy emphasizes the need for consistent sports instruction and training, as well as scouting for raw talent. Science training provided by experts from abroad will be used to produce quality players for the national team. The policy places a strong value-added emphasis on women's sports and ensures gender equality in the rights to practice sports.

The establishment of modern sports facilities and an all-encompassing athlete support system have made Bangladesh more competent as a player in the world arena and also used great potential in young people to get into shape. Despite the potential, the sports budget in Bangladesh is one of the lowest amongst other sectors with regards to financing which can affect athletes as well as sustainable sports culture.

The main objective of the research was to analyse the development of sports policy development and its implementation system in Bangladesh.

1. MATERIAL AND METHODS

This study presents a robust, evidence-based methodology to evaluate the effectiveness of sports policy development and implementation in developing nations, focusing on Bangladesh (Hameem & Asaduzzaman, 2023). Grounded in a multi-disciplinary approach, the methodology integrates qualitative techniques to assess eight critical factors identified through a comprehensive literature review: financial assistance, sports participation, sports administration and management, talent identification, athlete welfare, sports infrastructure, coaching and training, and sports science support. A structured survey questionnaire, developed through iterative consultations with subject experts and validated through pilot testing, was administered to key stakeholders—administrators, coaches, and players—across 21 districts in Bangladesh. The questionnaire employed a five-point Likert scale to capture nuanced perceptions, with reverse scoring for negative items to ensure objectivity (Joshi et al., 2015). Data collection followed a rigorous, multi-stage process, including purposive and random sampling to ensure representativeness and generalizability. Descriptive and inferential statistical analyses, conducted using advanced tools such as R Studio software, provided insights into the relationships between policy factors and their impact on sports ecosystems (Rode & Ringel, 2019). This methodology not only offers a replicable framework for evaluating sports policies in similar contexts but also provides actionable recommendations for policymakers to address sustainability challenges and socioeconomic disparities in sports development. By combining theoretical rigor with practical applicability, this study contributes to the global discourse on evidence-based sports policy formulation and implementation (Gharibpoor, 2024).

3. RESULTS

The research adopts a qualitative methods approach to comprehensively investigate the status of sports development in Bangladesh. While the primary focus is qualitative, exploring facets such as sports infrastructure, sports administration and management, talent discovery, sports person welfare, sports training and coaching, financial assistance, sports participation, and sports science backup, using a questionnaire employing a five-point scale adds a qualitative dimension to the study (Sonmezoglu et al., 2021). Included in this qualitative portion involves gathering data from administrators, coaches, and players that amount to numbers for analysis based on having set ranges of numerical responses (Morse & Cheek, 2014). Furthermore, the study achieves greater depth and completeness through several qualitative techniques employed during the analysis phase, which interpret the collected data based on the questionnaire. By integrating qualitative methods throughout the research process, the study aims to comprehensively understand sports development in Bangladesh, capturing both nuanced perspectives and statistical trends for a robust analysis (Tanni & Khan, 2024). This research presents the analysis and interpretation of data collected through questionnaires on “Analysis of infrastructure governance and stakeholder I policy development and implementation of sports in Bangladesh.” Questionnaires for the study through the survey were progressively saturated with the levels and sectors in this field of the sports industry. Data from the Directorate of Sports office, Administrative level, Coaches and Players were collected in 21 districts (4 divisions), that is Dhaka {61.5%, eight (8) out of 13}, Khulna {60 % six (6) out of 10} Rajshahi {62.5% 5 out of 8} and Sylhet {50% two (2) out of 4} which collectively represent 58.5% of the total 64 districts in Bangladesh (Figure 1), This research serves to uncover key trends and patterns in sports policy making and implementation to help

provide recommendations on how best the performance of sport development can be strengthened for increased participation within Bangladesh.



Figure 1: Demography of research area

Using the questionnaire responses, we can analyse and interpret with confidence where Bangladesh stands in policy development and implementation for sport. The purpose of the study is to explore sporting policy analytical aspects in terms of its development and implementation practice to contribute information for informing a way forward on future policy-making approaches that may guide sports development inside Bangladesh, with global relevance (Raji et al., 2022). The Likert scale was used to record the values from 1 to 5. The data were analyzed using the R Studio software, MS Word 2021, and MS Excel 2021. The analysis employed qualitative methods using R Studio to examine stakeholder perceptions of sports policy implementation in Bangladesh systematically. Survey responses from administrators, coaches, and players were organized into frequency matrices, with rows representing eight key policy elements and columns reflecting 5-point Likert-scale ratings. Advanced statistical software and tools were employed to analyze the collected data (Joshi et al., 2015). Advanced data analysis and visualization were performed using R Studio, which is widely considered the most powerful statistical package available in statistics (Solanki et al., 2023). This software has enabled us to apply a range of statistical tests and models, enabling the data analysis as detailed above. The study employed a qualitative research design, utilizing R Studio for statistical analysis to examine stakeholder perceptions of sports policy implementation in Bangladesh. Survey responses from administrators, coaches, and players were systematically organized into three separate frequency matrices (M1, M2, M3) in R Studio, with rows representing policy elements and columns reflecting 5-point Likert-scale responses. Each matrix was formatted to align stakeholder groups with their respective response distributions— 10×5 for coaches (M1), 10×5 for players (M2), and 10×5 for administrators (M3)—using R'. Pearson's Chi-square tests of independence were conducted

to evaluate associations between policy elements (e.g., infrastructure, funding) and stakeholder perceptions, with significance thresholds set at $p < 0.05$. Expected frequencies were verified to ensure Chi-square validity; all cells met the ≥ 5 threshold, eliminating the need for Fisher's exact test. Chi-square statistic (X^2), degrees of freedom (df), and p -values were extracted from R outputs to quantify the strength and significance of observed associations. Raw data, R scripts, and annotated code were archived in the thesis appendix to ensure transparency and replicability. The analysis focused solely on testing the null hypotheses of no association between policy elements and stakeholder responses, without preliminary interpretation of results (Dilanthi et al., 2002).

3.1 Calculation for facilities from the Administrators' questionnaire. Reference data

1. Does the government provide sufficient sports infrastructure and facilities development funds?
2. Do you think inadequate funding is the major cause of poor athlete training and coaching?
3. Does the government have any policy for conducting tests and evaluating players' performance regularly?
4. Does the center enjoy full autonomy in decision-making for sports development and programs?
5. How satisfied are you with the policy and procedure for rewarding players at different levels?
6. Do you think that changes in organizational structure at your center will improve training and coaching efficiency?
7. Does your organization provide adequate financial support for the training and coaching of athletes?
8. How satisfied are you with the existing sports talent identification procedure at the grassroots level?
9. Does the government allocate resources based on feedback from various sources for sports development?
10. How satisfied are you with the overall standard of sports in your district/country?

3.1.1: Analysis of Hypothesis for Administrator of Bangladesh

Ho: There is no significant association between policy elements (sports infrastructure, sports administration and management, talent discovery, sports person welfare, sports training and coaching, financial assistance, sports participation, and sports science backup) and administrators' response in policy development and implementation.

Pearson's Chi-squared test

$$\chi^2 = 176.42$$

$$df = 36$$

$$p\text{-value} < 2.2e - 16$$

Since the $p\text{-value} < 0.05$, so reject the null hypothesis. This means there is not sufficient evidence to support the claim that there is no significant association in the administrators' responses between policy elements (sports infrastructure, sports administration and management, talent discovery, sports person welfare, sports training and coaching, financial assistance, sports participation, and sports science backup) and policy development and implementation. Hence, we conclude that given the results of Pearson's Chi-squared test, which indicate a significant association between policy elements and policy development and implementation, here are the interpretations from the administration results (Kwak et al., 2023).

3.1.2: Descriptive analysis

Table 1. Likert score of Questionnaire response from the Administration of Bangladesh

Column	Likert scale					Total
	1s	2s	3s	4s	5s	
Q1	0	5	14	8	0	27
Q2	1	4	13	8	1	
Q3	0	1	14	4	8	
Q4	3	4	13	4	3	
Q5	1	3	14	8	1	
Q6	0	1	7	12	7	
Q7	17	5	3	0	2	
Q8	1	6	7	13	0	
Q9	0	6	11	9	1	
Q10	0	6	11	9	1	

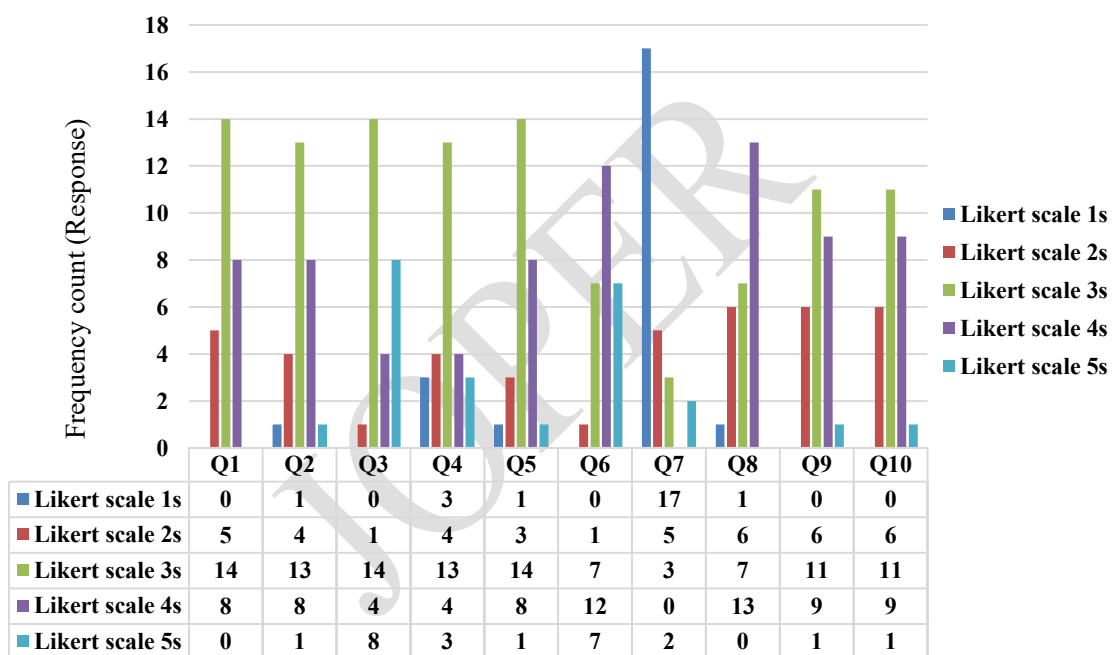


Figure 1: Graph of Questionnaire response from the Administrators’ of Bangladesh

The findings from (Table no.1 and Fig. no. 1), the administrative responses in Bangladesh highlight mixed perceptions regarding the effectiveness of government policies and practices in sports development. A major concern is inadequate financial support: most respondents strongly disagreed that their organizations provide sufficient funding for athlete training and coaching (item 7, with 17 choosing “never”). This aligns with previous research emphasizing that inadequate financing is one of the most critical barriers to sports development in South Asia (De Bosscher et al., 2015; Sam, 2012). Although respondents indicated moderate satisfaction with infrastructure development and player reward systems (items 1, 5, 9, and 10), the dominant responses of “sometimes” and “satisfied” suggest only partial implementation of policies, reflecting inconsistency in government efforts (Houlihan & Green, 2008). On talent identification and performance evaluation, responses were again divided, which supports the argument that grassroots programs and monitoring systems in developing countries often lack systematic frameworks (Green & Oakley, 2001). Interestingly, a relatively higher proportion of respondents believed that structural reforms

could enhance training and coaching efficiency (item 6), consistent with studies advocating decentralization and organizational restructuring to improve governance effectiveness in sports systems (Hoye & Cuskelly, 2007). Overall, the results point toward the presence of policies but reveal significant gaps in financial commitment, grassroots engagement, and governance practices-issues that remain central to the discourse on sports policy effectiveness in Bangladesh and similar developing contexts.

3.2 Calculation for facilities from the coaches' questionnaire. Reference data

2. Does the authority provide sufficient funding for sports infrastructure and maintenance to your satisfaction?
3. Do you think inadequate funding is the primary cause of poor athlete training and coaching?
4. How satisfied are you with the quality and effectiveness of the coaching provided by the coaches?
5. Does the government provide financial assistance for training and coaching programs?
6. Do you think the national sports policy includes strategic long-term plans for development?
7. How satisfied are you with the training and coaching facilities available at your center?
8. How satisfied are you with the performance of your trainees at different competition levels?
9. Does the center organize coaching camps for players before competitions?
10. How satisfied are you with the efforts made to develop world-class coaches in your district/country?
11. Does the center have policies in place to regularly assess and provide feedback on players' performance?

3.2.1: Analysis of Hypothesis for Coaches.

H₀: There is no significant association between policy elements (sports infrastructure, sports administration and management, talent discovery, sports person welfare, sports training and coaching, financial assistance, sports participation, and sports science backup) and the response of coaches in policy development and implementation.

Pearson's Chi-squared test

$\chi^2 = 54.51,$

df = 36,

p - value = 0.02462

Since the **p-value < 0.05**, reject the null hypothesis. This means there is not sufficient evidence to support the claim that there is no significant association in the coaches' responses between policy elements (sports infrastructure, sports administration and management, talent discovery, sports person welfare, sports training and coaching, financial assistance, sports participation, and sports science backup) and policy development and implementation. Hence, we conclude that, given the results of Pearson's Chi-squared test, which indicate a significant association between policy elements and policy development and implementation, here are the interpretations from the coaches' results (Blak Bernat et al., 2023).

3.2.2: Descriptive analysis

Table 2: Likert score of Questionnaire responses from the coaches of Bangladesh

Column	Likert scale					Total
	1s	2s	3s	4s	5s	
Q1	8	6	28	18	18	78
Q2	6	12	16	18	26	
Q3	12	12	24	18	12	
Q4	12	12	24	18	12	
Q5	10	14	20	14	20	
Q6	12	22	18	12	14	
Q7	6	8	14	16	34	
Q8	12	18	18	12	18	
Q9	12	14	22	14	16	
Q10	6	14	20	18	20	

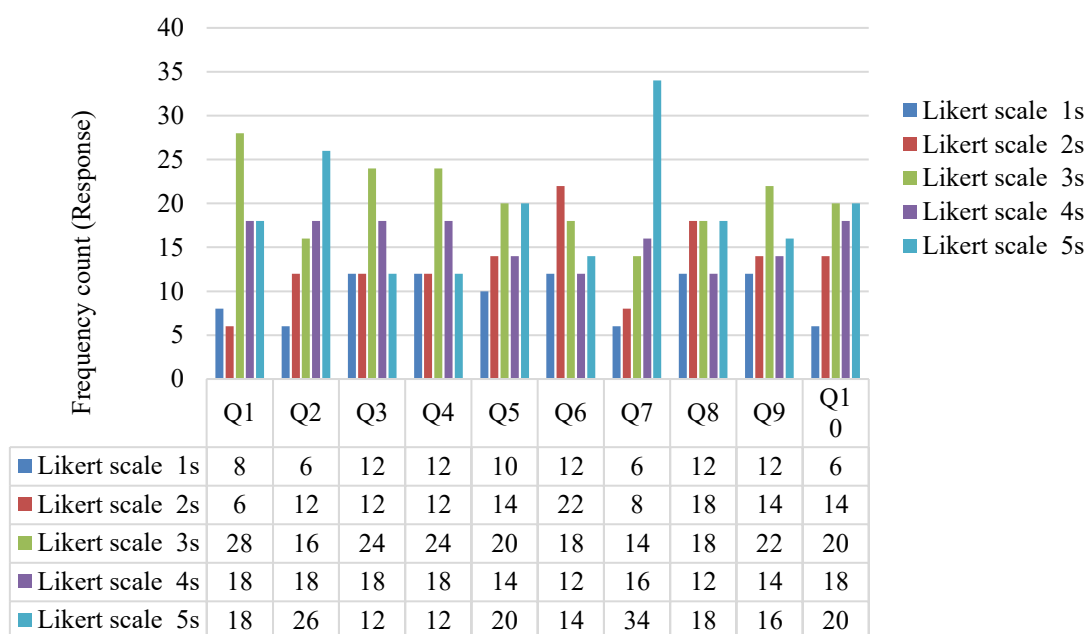


Figure 2: Graph of Questionnaire responses from the coaches of Bangladesh

The responses from coaches in Bangladesh (Table 2 & Figure 2), present a mixed but insightful picture of sports policy implementation. Overall, the distribution of responses clustered around the middle categories (“sometimes” and “satisfied”) suggests moderate satisfaction, with notable concerns about structural and policy effectiveness. Questions relating to infrastructure, funding, and performance evaluation (Q1–Q4) reflected ambivalence, as many coaches acknowledged partial government efforts but emphasized inconsistency in policy application. A relatively positive trend was observed in financial support for training and coaching (Q7), where a significant number of respondents (34) selected “always,” indicating that resource provision in this area may be comparatively stronger. Conversely, organizational efficiency and the need for structural reforms (Q6) elicited more negative responses, pointing toward governance challenges within sports administration. Similarly, perceptions about grassroots talent identification (Q8) and resource allocation mechanisms (Q9) were divided, reflecting concerns about inadequate strategic planning and uneven implementation at the ground level. These findings align with prior literature that stresses financial commitment as a crucial driver of sports development (De Bosscher et al., 2015), but also highlight that without strong governance structures, policy coordination, and systematic grassroots initiatives, financial input alone cannot ensure sustainable growth (Green & Houlihan, 2005; Hoye & Cuskelly, 2007). Thus, while coaches

acknowledge certain strengths in Bangladesh’s sports policy, their responses reveal persistent weaknesses in governance, talent systems, and consistent policy execution.

1.3 Calculation for facilities from the players' questionnaire. Reference data set

1. How satisfied are you with the training facilities available at your center?
2. How satisfied are you with the sports equipment supplied by the authority for practice and competitions?
3. Do you feel that the services of some other reputed coaches on short-term basis are also essential to improve the performance level?
4. How satisfied are you with the quality and effectiveness of the coaching provided at your center?
5. Does your center maintain records of players’ performances at different levels?
6. How satisfied are you with the policy and procedure for the reward and recognition of players?

7. How satisfied are you with the selection process for athletes at your center?
8. Does the authority provide support for players during their athletic careers and after retirement?
9. Do you believe that sports science principles positively impact your performance and training?
10. How satisfied are you with the opportunities available for your educational and professional development as an athlete?

3.3.1: Analysis of Hypothesis for Players

Ho: There is no significant association between policy elements (sports infrastructure, sports

Table 3 Likert score of the Questionnaire response from the Players of Bangladesh

Column	Likert scale					Total
	1s	2s	3s	4s	5s	
Q1	12	26	78	56	12	184
Q2	14	22	68	52	28	
Q3	40	24	60	32	28	
Q4	6	30	54	46	48	
Q5	22	38	62	34	28	
Q6	20	46	54	38	26	
Q7	44	32	50	24	34	
Q8	26	50	54	36	18	
Q9	20	42	66	38	18	
Q10	10	34	52	48	40	

administration and management, talent discovery, sports person welfare, sports training and coaching, financial assistance, sports participation, and sports science backup) and the response of players in policy development and implementation.

Pearson’s Chi-squared test

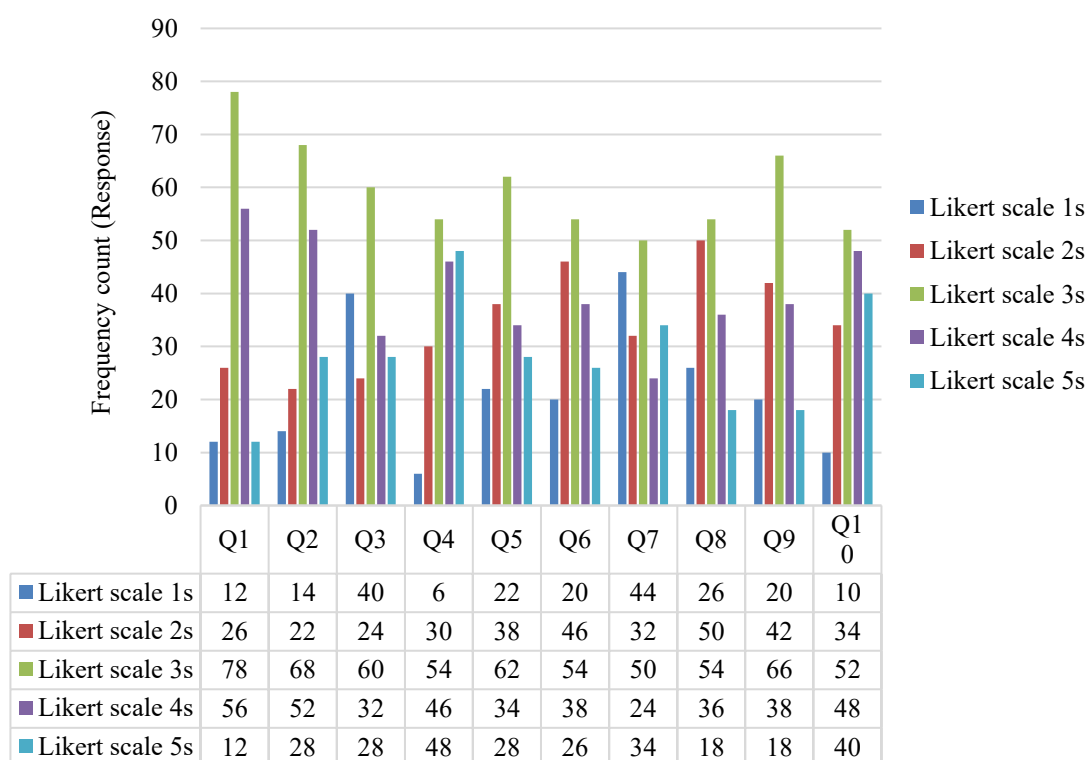
$$\chi^2 = 159.09$$

$$df = 36$$

$$p - \text{value} < 2.2e - 16$$

Since the **p-value < 0.05**, so reject the null hypothesis. This means there is not sufficient evidence to support the claim that there is no significant association in the players' responses between policy elements (sports infrastructure, sports administration and management, talent discovery, sports person welfare, sports training and coaching, financial assistance, sports participation, and sports science backup) and policy development and implementation. Hence, we conclude that, given the results of Pearson's Chi-squared test, which indicate a significant association between policy elements and policy development and implementation, here are the interpretations from the players' results.

3.2.2: Descriptive analysis



The responses from (Table 3 & Figure 3), players in Bangladesh reflect moderate satisfaction with sports policy implementation, with most answers concentrated around the mid-level (“sometimes” and “satisfied”). While infrastructure and funding (Q1, Q2) were seen as partially available, concerns were stronger around performance evaluation, governance, and organizational efficiency (Q3, Q5, Q6, Q7), where many players expressed dissatisfaction. Talent identification and grassroots mechanisms (Q8, Q9) also showed mixed results, suggesting weak systematic structures. On a positive note, relatively higher satisfaction was observed in reward and recognition policies (Q4, Q10). These findings indicate that although progress has been made in resource allocation and incentives, persistent challenges in governance, evaluation, and grassroots development remain—consistent with earlier research emphasizing the need for robust structures and sustained investment in developing countries (De Bosscher et al., 2015; Green & Houlihan, 2005; Hoye & Cuskelly, 2007).

4. DISCUSSION

This study’s findings provide critical insights into the challenges and opportunities in sports policy development and implementation in Bangladesh, aligning with the research objectives and hypotheses. The statistical analysis (using Pearson’s Chi-square test) rejected all three null hypotheses, confirming significant associations between policy elements (infrastructure, governance, talent development, funding, etc.) and stakeholder perceptions (administrators, coaches, and players). Below is a detailed discussion structured around key themes (Weber, 2009).

i. Infrastructure Deficits and Governance Issues.

The study reveals that sports infrastructure remains underdeveloped, with administrators highlighting insufficient stadiums, training centres, and maintenance of existing facilities. Despite recent budget increases (e.g., Tk 2,211 crore in FY 2024-25), financial mismanagement and bureaucratic inefficiencies hinder effective implementation. Many respondents noted that funds are often misallocated, with limited transparency in spending. This aligns with the first objective, which sought to evaluate infrastructure and governance components within policy frameworks.

ii. Weak Talent Identification and Athlete Support Systems.

Coaches and players emphasized a lack of structured talent development programs, particularly at grassroots levels. Unlike countries with strong sports policies (e.g., India’s Khelo India initiative), Bangladesh lacks systematic scouting, youth academies, and long-term athlete development pathways. The absence of sports science integration further limits performance optimization, as hypothesized.

iii. Disparities in Funding Allocation.

While the government has increased sports budgets, players and coaches reported uneven distribution, with elite sports receiving more attention than grassroots programs. Many district-level athletes struggle with inadequate financial support, training equipment, and access to qualified coaches. This validates the third objective, which assessed whether funding aligns with policy goals.

iv. Stakeholder-Specific Perspectives.

Administrators identified poor financial governance and political interference as major obstacles, leading to inconsistent policy execution. Coaches stressed inadequate training facilities and outdated coaching methods, limiting athletes’ potential. Players highlighted limited access to quality infrastructure, medical support, and competition opportunities, affecting motivation and performance.

v. Policy-Implementation Gap.

The study confirms a disconnect between policy formulation and execution. While Bangladesh has introduced sports policies, weak monitoring mechanisms and stakeholder

engagement lead to poor outcomes. Comparatively, successful sports nations (e.g., UK, Australia) emphasize accountability, data-driven decision-making, and public-private partnerships—areas where Bangladesh lags.

The findings underscore the urgent need for infrastructure modernization, financial governance reforms, and talent ecosystem development. Addressing these gaps can help Bangladesh align its sports policies with international benchmarks, fostering a sustainable sports culture. Future research should explore comparative case studies from other developing nations to refine policy recommendations.

5. CONCLUSION

This study has comprehensively addressed its three primary research objectives regarding sports policy development and implementation in Bangladesh. First, through rigorous analysis of infrastructure components, the study revealed systemic deficiencies in sports facilities across all levels, from grassroots to elite training centers. The findings show that despite gradual budget increases, infrastructure development remains hampered by poor maintenance, uneven regional distribution, and lack of modern equipment, particularly outside major urban centers.

Second, the examination of governance structures uncovered critical weaknesses in policy implementation mechanisms. The study identified overlapping bureaucratic responsibilities, frequent political interference in sports administration, and the absence of clear accountability frameworks as major obstacles. These governance challenges result in inefficient resource allocation and inconsistent policy execution, undermining the potential impact of otherwise sound policy formulations.

Third, the assessment of talent development systems exposed significant gaps in Bangladesh's sports ecosystem. The research found no standardized nationwide talent identification program, inadequate youth development pathways, and minimal integration of sports science in training regimens. This fragmented approach to talent nurturing has resulted in missed opportunities to develop world-class athletes despite the country's large population base.

The study concludes that meaningful progress requires simultaneous reforms across all three dimensions. Infrastructure development must prioritize not just construction but sustainable maintenance plans and equitable geographic distribution. Governance reforms should focus on depoliticizing sports administration while establishing transparent monitoring systems. Talent development requires establishing scientific scouting networks, modern training academies, and long-term athlete support programs. These systemic changes, implemented with proper funding and oversight, could transform Bangladesh's sports landscape within a decade. Future research should track the implementation and impact of these recommended reforms to establish best practices for sports development in a similar context.

6. REFERENCES

- Albujulaya, N., Stevinson, C., & Piggan, J. (2023). Physical activity policy in Saudi Arabia: analysis of progress and challenges. *International Journal of Sport Policy and Politics*, 00(00), 1–16.
- Blak Bernat, G., Qualharini, E. L., Castro, M. S., Barcaui, A. B., & Soares, R. R. (2023). Sustainability in Project Management and Project Success with Virtual Teams: A Quantitative Analysis Considering Stakeholder Engagement and Knowledge Management. In *Sustainability (Switzerland)* (Vol. 15, Issue 12).
- Bonell Monsonís, O., Spörri, J., Warsen, M., Bolling, C., Gouttebauge, V., & Verhagen, E. (2024). We know a lot about little and little about a lot: A contextualized scoping review on injury prevention in alpine ski racing. *Scandinavian Journal of Medicine and Science in Sports*, 34(1), 1–20.

- Chan, A. S. W., Choong, A., Phang, K. C., Leung, L. M., Tang, P. M. K., & Yan, E. (2024). Societal discrimination and mental health among transgender athletes: a systematic review and Meta-analysis. *BMC Psychology*, 12(1), 1–15.
- Code, L. (n.d.). *Examining the Satisfaction of Student and Teacher about New Curriculum of ' Physical Education & Sport' of Class Nine – Ten in Bangladesh* 방글라데시 9-10 학년의 새로운 체육 교과과정연구.
- Crossman, S., Drummond, M., Elliott, S., Kay, J., Montero, A., & Petersen, J. M. (2024). Facilitators and constraints to adult sports participation: A systematic review. *Psychology of Sport and Exercise*, 72(February), 102609.
- Dilanthi, A., David, B., Marjan, S., & Rita, N. (2002). Quantitative and qualitative research in the built environment: application of “mixed” research approach. *Work Study*, 51(1), 17–31.
- DeBosscher, V., Shibli, S., Westerbeek, H., & van Bottenburg, M. (2015). Successful elite sport policies: An international comparison of the sports policy factors leading to international sporting success (SPLISS 2.0) in 15 nations. Meyer & Meyer Sport.
- Eschenbacher, H., & Ph, D. (2011). *CARE Bangladesh Girls' Education and Leadership Evaluation Innovation through Sport : Promoting Leaders , Empowering Youth Final Evaluation Report Prepared by*.
- Evana, E. T., Tasnin, F., Akhter, M., Aishee, M. R., & Aman, S. (n.d.). *The Role of Educational Institutions on Professionalizing Sports in Bangladesh*.
- Fan, Z., Min, L., He, W., Yang, Y., Ma, W., & Yao, J. (2024). *Effectiveness of Multi-Component Interventions on Injury Risk Among Ice and Snow Sports Participants-A Systematic Review and Meta-Analysis*. 1–28.
- Hafiar, H., Budiana, H. R., Abdullah, K. H., Sofyan, D., & Amin, K. (2024). Scoring big: a bibliometric analysis of the intersection between sports and public relations. *Cogent Social Sciences*, 10(1).
- Green, M., & Houlihan, B. (2005). *Elite sport development: Policy learning and political priorities*. Routledge.
- Green, M., & Oakley, B. (2001). Elite sport development systems and playing to win: Uniformity and diversity in international approaches. *Leisure Studies*, 20(4), 247–267.
- Hoye, R., & Cuskelly, G. (2007). *Sport governance*. Routledge.
- Hameem, S., & Asaduzzaman, M. (2023). Community Participation in the Sports Clubs of Bangladesh : The Case of Sheikh Kamal Sports Complex of Abahani Limited. *Journal of the International Society for the Study of Vernacular Settlements*, 10(5), 296–306.
- Joshi, A., Kale, S., Chandel, S., & Pal, D. (2015). Likert Scale: Explored and Explained. *British Journal of Applied Science & Technology*, 7(4), 396–403.
- Kwak, D., Kim, J. J., Jeong, W. K., Lee, J. H., & Choi, I. C. (2023). Orthopedic Injuries among Elite Adult Ice Hockey Players in Korea: A Self-Reported Questionnaire-Based Study. *The Korean Journal of Sports Medicine*, 41(3), 130–137.
- Lyngdoh, A. T. G., & Purkayastha, S. (2024). Trend Analysis of Temperature Over the Meghalaya Plateau: a Case Study of Ri Bhoi District. *Acta Geographica Debrecina Landscape & Environment Series*, 18(2), 2024–2063.
- Morse, J. M., & Cheek, J. (2014). Making room for qualitatively-driven mixed-method research. *Qualitative Health Research*, 24(1), 3–5.
- Moustakas, L., & Tshube, T. (2020). Sport policy in Botswana. *International Journal of Sport Policy and Politics*, 12(4), 731–745.
- Murray, C., Coyle, B., Morgan, H., Marder, I., Woods, D., Haughey, T., Maycock, M., Genovesi, F., Meek, R., Parker, A., Smith, A., Kay, C., Brink, G., Rovers, H., Haudenhuyse, R., Roe, D., Contreras-Osorio, F., Donohue, B., Bohall, G., ... Breslin, G. (2024). International consensus statement on the design, delivery and evaluation of sport-based interventions aimed at promoting social, psychological and physical well-being in prison. *BMJ Open*, 14(1).
- Raji, A., Liniger, A., Giove, A., Toschi, A., Musiu, N., Morra, D., Verucchi, M., Caporale, D., & Bertogna, M. (2022). Motion Planning and Control for Multi Vehicle Autonomous Racing at High Speeds. *IEEE Conference on Intelligent Transportation Systems, Proceedings, ITSC, 2022-October*, 2775–2782.
- Rode, J. B., & Ringel, M. M. (2019). Statistical Software Output in the Classroom: A Comparison of R and SPSS. *Teaching of Psychology*, 46(4), 319–327.
- Sam, M. P. (2012). Targeted investments in elite sport funding: Wiser, more innovative and strategic? *Managing Leisure*, 17(2–3), 207–220.
- Shilbury, D., Popi Sotiriadou, K., & Christine Green, B. (2008). Sport Development. Systems, Policies and Pathways: An Introduction to the Special Issue. *Sport Management Review*, 11(3), 217–223. [https://doi.org/10.1016/S1441-3523\(08\)70110-4](https://doi.org/10.1016/S1441-3523(08)70110-4)
- Solanki, S., Paluri, A. R., & Singh, S. (2023). Exploring the dynamics of defense expenditure and economic development: A bibliometric analysis. *International Journal of Business and Society*, 24(3), 1314–1343.

- Sonmezoglu, S., Fineman, J. R., Maltepe, E., & Maharbiz, M. M. (2021). Monitoring deep-tissue oxygenation with a millimeter-scale ultrasonic implant. *Nature Biotechnology*, 39(7), 855–864.
- Tanni, A. A., & Khan, M. I. (2024). *Exploring the Gender Disparity in Sports Participation : A Qualitative Analysis of Women 's Limited Engagement in Sports in Bangladesh*. 6(1), 43–51.
- Walton, C. C., Purcell, R., Henderson, J. L., Kim, J., Kerr, G., Frost, J., Gwyther, K., Pilkington, V., Rice, S., & Tamminen, K. A. (2024). Mental Health Among Elite Youth Athletes: A Narrative Overview to Advance Research and Practice. *Sports Health*.
- Weber, R. (2009). Protection of Children in Competitive Sport. *International Review for the Sociology of Sport*, 44(1), 55–69.
- Woods, C. B., Volf, K., Kelly, L., Casey, B., Gelius, P., Messing, S., Forberger, S., Lakerveld, J., Zukowska, J., & Bengoechea, E. G. (2021). The evidence for the impact of policy on physical activity outcomes within the school setting: A systematic review. *Journal of Sport and Health Science*, 10(3), 263–276.
- Tao, T., Gu, Y., Shu, T., Wang, Z., Yang, Z., & Hu, Z. (2023). Language Models Meet World Models: Embodied Experiences Enhance Language Models. *Advances in Neural Information Processing Systems*, 36(NeurlIPS), 1–21.

JOPER